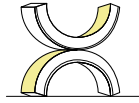


NCF1010 TOP BENDING

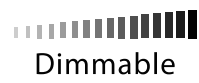
Flexible Silicone LED Neon Strip



SPECIFICATION



CE RoHS



Dimmable

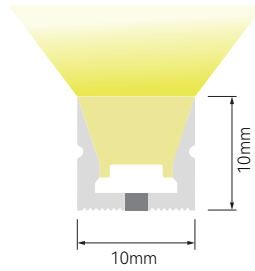
Custom LED Linear Lighting System Solutions.

We deliver complete LED linear lighting systems — designed for architectural and commercial projects that require stable performance, system compatibility, and project-specific customization.

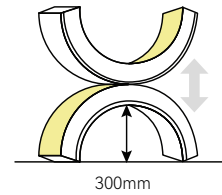
With OEM customization, branded details, and exclusive product development, we help transform lighting from a functional element into a refined expression of brand character and experience.

NCF1010 TOP BENDING

Flexible Silicone LED Neon Strip



Across section size's picture



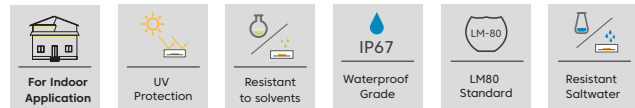
Three color silicone structure with clear cutting mark.

Bendable at horizontal direction.

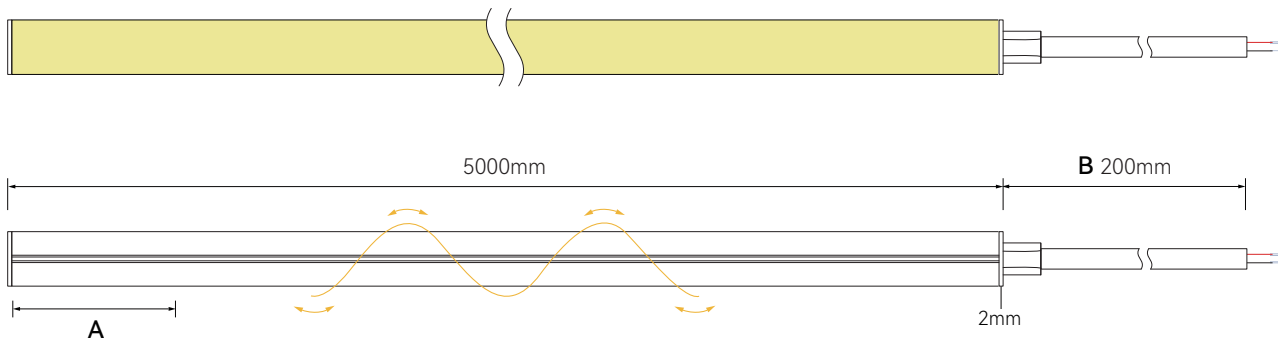
High lumen solution with special structure

High light transmittance, environmental silicone material.

Unique optical light distribution structural design, uniform lighting.



DIMENSION STRUCTURE



A) Cutting unit

CCT	Unit
Single-color	50mm

B) Cable Lead Option



NCF1010 TOP BENDING

Flexible Silicone LED Neon Strip



SPECIFICATION

SINGLE COLOR - AT2835XX90-24160080-NCF1010

LED type	2835	CRI	CCT	Lumen/m	Efficiency/W
LED Qty's	160LEDs/m	> 90	● 2700K	1200	100
PCB width	8mm	> 90	● 3000K	1224	102
Voltage	24V	> 90	● 3500K	1224	102
Power	12W/m	> 90	● 4000K	1320	108
Beam angle	120°	> 90	● 5000K	1272	106
Warranty	3-5Years	> 90	● 6000K	1296	110

*Ta=30 °C, 12hours/Day

+/- 10% lumen tolerance

NCF1010 TOP BENDING

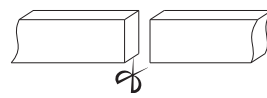
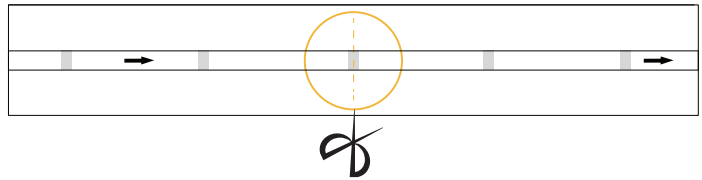
Flexible Silicone LED Neon Strip



CUTTING MARK



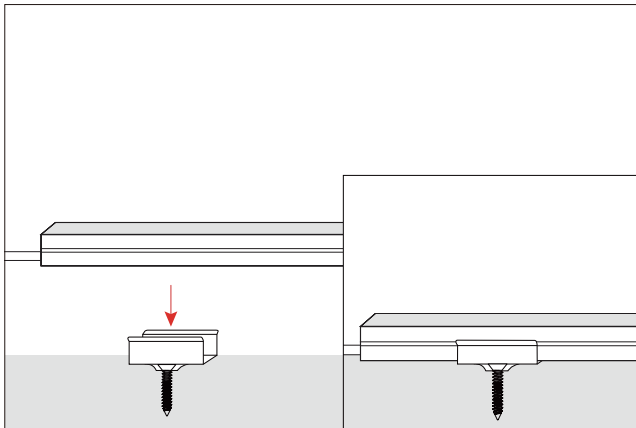
Use professional scissors to cut vertically at the cutting mark.



Vertical cutting precisely in the exact cutting position of led strip.

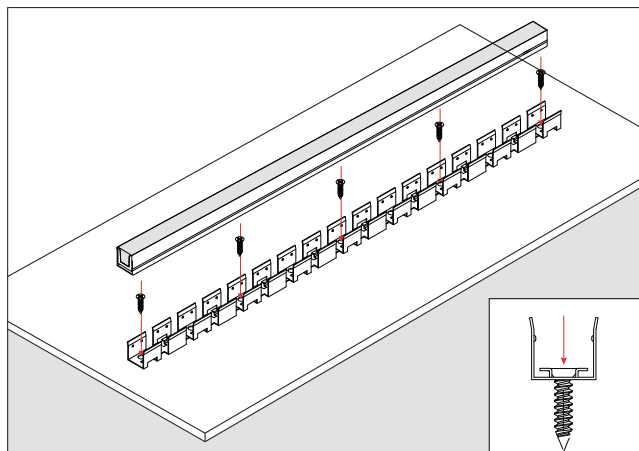
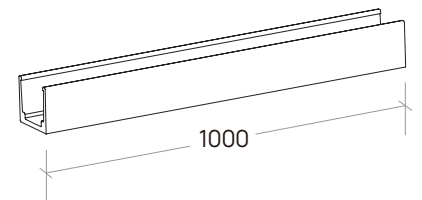
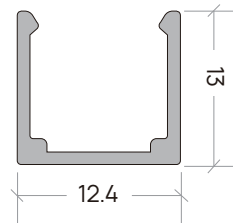
The bottom of the led strip has a clear mark, the black marker is the cutting position.

ACCESSORIES



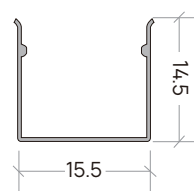
ALUMINIUM MOUNTING CLIPS / ALUMINIUM PROFILE
W12.4 × H13MM / W12.4 × H13 × 1000MM

END VIEW



FLEXIBLE STAINLESS STEEL PROFILE
W15.5 × H14.5MM

END VIEW



SIDE



TOP

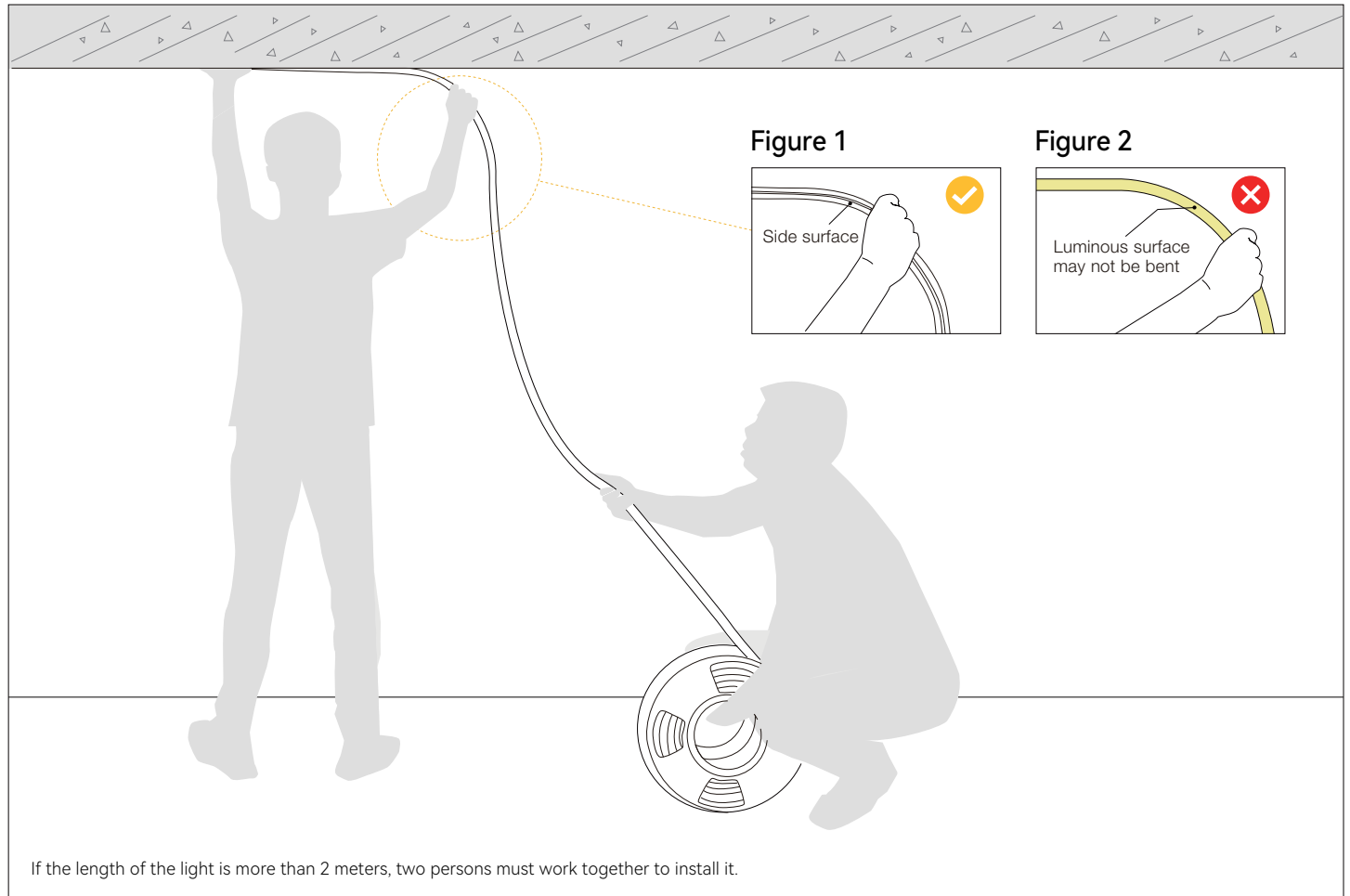


NCF1010 TOP BENDING

Flexible Silicone LED Neon Strip



INSTALLATION PRECAUTIONS-TOP MOUNTED



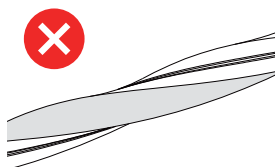
1.Installer:

Press the light with the palm of the left hand to slowly load it into the slot. Straighten the light with your right hand so that it droop naturally. See **Figure 1**.

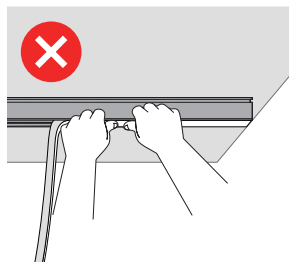
Luminous surface may not be bent. See **Figure 2**.

2.Assistant:

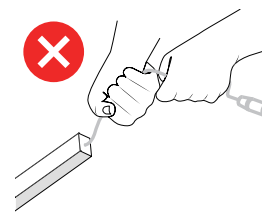
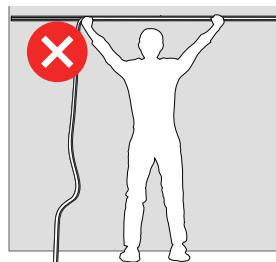
Cooperate with the installer to slowly deliver the light to installer. Do not pull or twist the light during the installation.



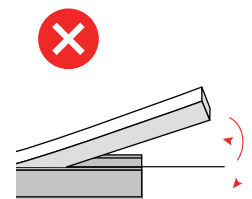
As shown in the figure, twisting or coiling the light strip during installation is prohibited.



Do not let any portion of the fixture hang in any direction during installation. Use two people to install to ensure the fixture does not hang.



Do not grab or pull by the wire feeds.



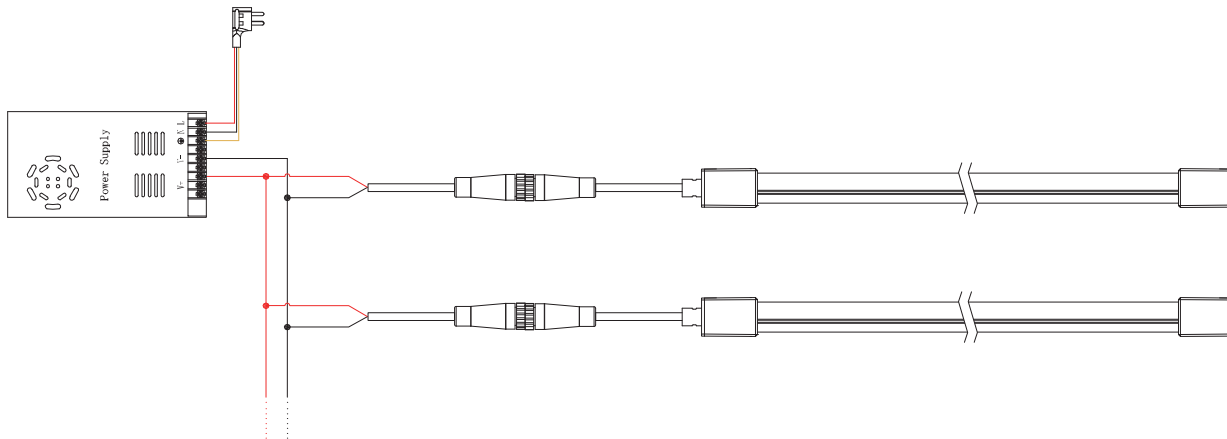
Do not bend the fixture more than 15 degrees when installing into mounting brackets or channels.

NCF1010 TOP BENDING

Flexible Silicone LED Neon Strip



SINGLE COLOR CONNECTION DIAGRAM



WARNING

Power Supply

The product must be powered by an isolated constant-voltage power supply with output ripple $\leq 5\%$. A minimum 20% power margin is required (maximum 80% rated load). Non-compliant power supplies will cause unstable operation and premature product failure.

Voltage & Polarity

Supply voltage and polarity must strictly match product specifications. Incorrect voltage or reverse polarity will cause immediate and irreversible damage.

Mechanical Bending

Installation must maintain a minimum bending radius of ≥ 300 mm. Twisting, sharp bending, or over-bending will permanently damage internal structures.

Maximum Run Length

The specified maximum continuous run length must not be exceeded. Exceeding this limit will result in overheating, uneven brightness, and shortened service life.